








SINCE 1946

**MOTO FLASH**  **LINE**



Art.								
		cm	inch	cm	inch	mm	inch	
MOTO-300-FL	230V~/1,6kW (2,1HP)	340	134	0 ÷ 2	0 ÷ 3/4	150/30	6 / 1-3/16	12,8
MOTO-300-FL-115V	110/120V~/1,6kW (2,1HP)	340	134	0 ÷ 2	0 ÷ 3/4	150/30	6 / 1-3/16	12,8
MOTO-300-FL-PU (Power Unit)	230V~/1,6kW (2,1HP)	340	134	0 ÷ 2	0 ÷ 3/4	150/30	6 / 1-3/16	6,9
MOTO-300-FL-PU-115V (Power Unit)	110/120V~/1,6kW (2,1HP)	340	134	0 ÷ 2	0 ÷ 3/4	150/30	6 / 1-3/16	6,9

ITALIANO



ENGLISH



FRANÇAIS



DEUTSCH



NORSK



ESPAÑOL



ČESKY



POLISH



# USAGE INSTRUCTIONS



Necessity



Prohibited



Danger



*Carefully read and maintain.*

## 1 | DRY ELECTRIC CUTTER

- **EXCLUSIVELY** for processing porcelain tiles and stone materials.
- Only for professional use and only with dedicated tools MONTOLIT.
- **CAUTION!** Machine ready for use, do not tamper.
- For a better finish and longer tool life, proceed slowly and don't force the cut.

## 2 |

- Before leaving the production workshop, your machine was subjected to in depth testing in order to guarantee the quality, safety and efficiency of the product. By carefully following the instructions contained in this manual, you ensure a long life for your machine under normal usage conditions.
- Before using the machine, carefully read this instruction manual in order to avoid accidents or malfunctions.
- Do not tamper with the protections and guards provided by the manufacturer in any way.
- Do not modify any part of the machine in any way.
- All modifications must be made by the manufacturer only.
- Only use original spare parts.
- Brevetti MONTOLIT disclaims any liability in the event of non-compliance.

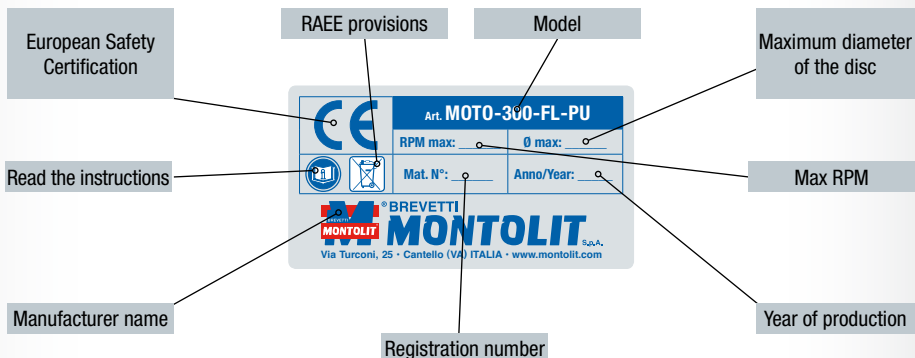
## 3 | CAREFULLY FOLLOW THE REGULATIONS IN PLACE REGARDING HEALTH AND SAFETY IN THE WORKPLACE

- The use of suitable personal protective equipment for the hearing is required. Noise level > 85dB (A).
- The vibrations level was detected in accordance with the EN0745 standard.

If the machine is not correctly serviced and/or if the tools are worn or damaged, the vibrations level may differ.



## 4 | IDENTIFICATION PLATE



## 5 PREPARATION - ELECTRIC POWER SUPPLY

Art. MOTO-300-FL  
Art. MOTO-300-FL-115



Art. MOTO-300-FL-PU  
Art. MOTO-300-FL-PU-115



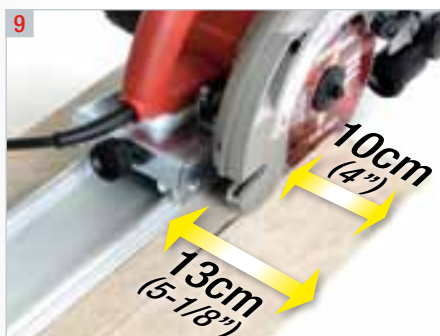
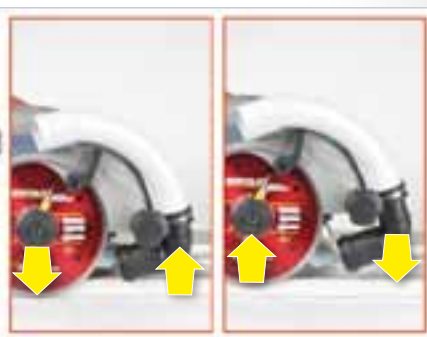
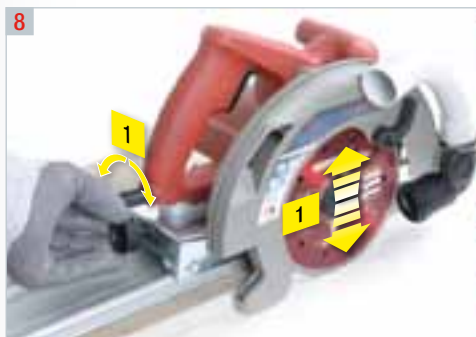
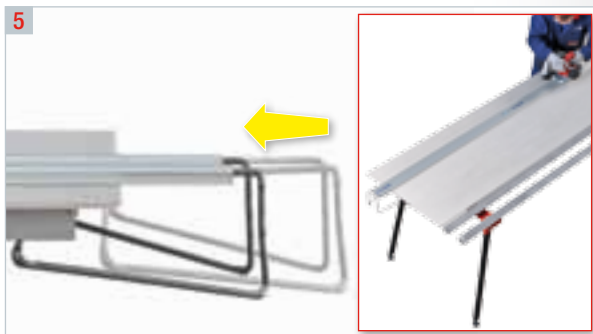
**WARNING!**

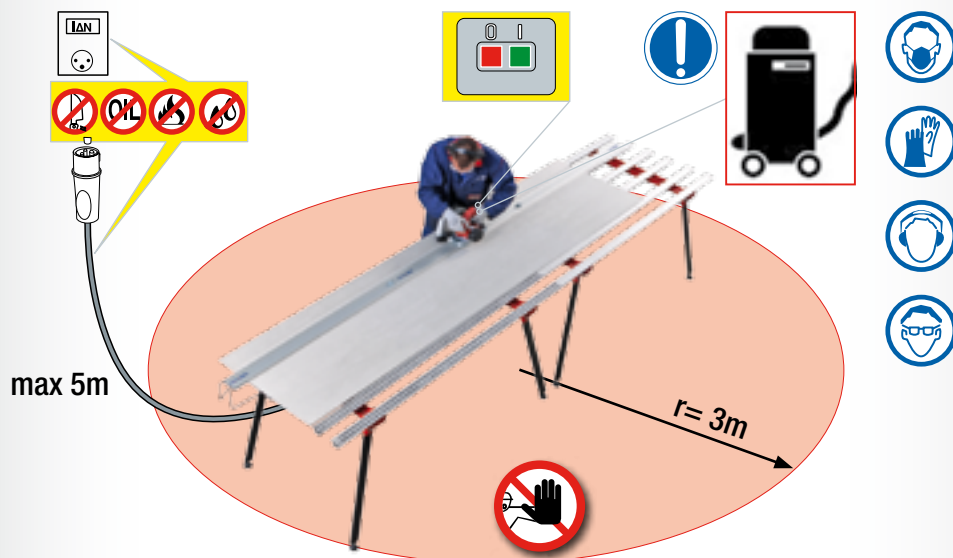
- Check the integrity of the electric cutter cable.
- Observe the voltage (V) and frequency (Hz) indicated on the electric cutter
- For an extension, use only the IP67 (2P+T) socket and plug and a 3 x 2.5mm<sup>2</sup> cable of the H 07 RN-F type (max length 5 m).
- Check the placement of the power cable: it must not obstruct movement, and should not be subject to shock or damage.
- Remove the electrical connection in any cases of maintenance or replacement of the diamond blade.
- Do not force the motor during processing.
- In the event of electric cutter malfunctions, contact an expert or our Technical Office.



## 6 CORRECT POSITIONING

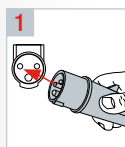






- The operator must position himself in a safe and balanced way and must not be distracted during processing.
- The operator is always responsible for accidents that may occur to other people or their property.
- Do not allow other people to touch the machine or the cable. They must be kept away from the work space.
- We recommend wearing gloves and shoes with non-slip soles. If you have long hair, it must be gathered up or a protective cap used. Wear protective goggles.
- Use adequate hearing protection.
- Do not wear large clothing, objects or jewelry that can become stuck in moving parts.
- The work area must be flat, dry, free of obstacles, well ventilated and illuminated.
- Do not use the machine near flammable liquids or gas.
- Keep the cable away from high temperatures, oil, and sharp edges.
- **IMPORTANT!** Always work with the vacuum connected.

## 7 CORRECT USE





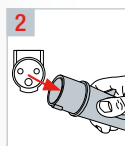
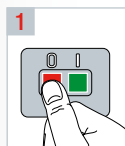
## 8 | SUBSTITUTION OF THE DIAMOND DISK

- Use only diamond disks of the diameter and type set out by Brevetti MONTOLIT.
- For greater cut precision and economy, choose the MONTOLIT diamond disk specific to the use by consulting the MONTOLIT catalog.



### **IMPORTANT!**

- The diamond tool and its mounting system must always be in perfect condition.
- The use of diamond tools with excessive wear, eccentricity and/or micro-scratches on the diamond crown is dangerous.
- In case the tool does not cut, it should be sharpened by using the appropriate MONTOLIT sharpening stick (art. 395B- 395BJ).



## 9 PERIODIC CLEANING - ROUTINE MAINTENANCE

- Pull out the plug before proceeding with cleaning, maintenance or repairs on the machine, as well as before transporting it.
- Use only fabric cloths to clean the machine.
- Do not use compressed air, water and/or detergent products to clean the machine.
- Periodically examine the machine cables, and in the case that they are damaged, have them repaired by the authorized technical service.
- Keep the handles dry, clean and without oil or grease.



### ATTENTION!

Guards or other damaged parts should be properly repaired or replaced by the authorized technical service, unless otherwise indicated in this operation manual.

## 10 PUTTING OUT OF SERVICE

- Carry out regular cleaning and routine maintenance.
- Store everything in a dry, safe place, away from children.

## 11 DISMANTLING OF THE MACHINE

- Follow the local provisions for the disposal of electrical products.
- Valuable materials can be recovered by recycling.
- The electrical components used for construction are in accordance with the regulation RoHS 2002/95/EC.
- Contact our Technical Office for further information.



## 12 ACCESSORIES

- The machine comes with one hex key to be used for assembly/disassembly of the diamond disk as well as this operation and maintenance manual.

## 13 GUARANTEE

Valid for 1 (one) year from the sell date (invoice or shipping bill or fiscal sales receipt).  
Breakdowns resulting from non-conforming use or normal wear are excluded from this guarantee.

*Brevetti MONTOLIT has always employed and provided first choice materials. This is a commitment to seriousness and commercial morality that elevates our company to the highest standard. The product's safety and warranty are a source of pride for us. This operational reality is not just words, but a real and written guarantee. In fact, we ensure all of our products against involuntary damage caused by accidents occurring as a result of a construction or manufacturing defect, even after delivery and commercialization.*



The descriptions and diagrams are intended to provide a simple means of illustration. The Company reserves the right, without prejudice to the essential characteristics of the models described and illustrated here, to make any modifications it deems necessary for improvement or for any constructive or commercial need at any time and without notice.

All total or partial reproductions of this document in any format or by any means or procedure, photographic or electronic, without prior authorization of Brevetti MONTOLIT S.p.A. is prohibited. Each of these activities could lead to subsequent criminal proceedings.